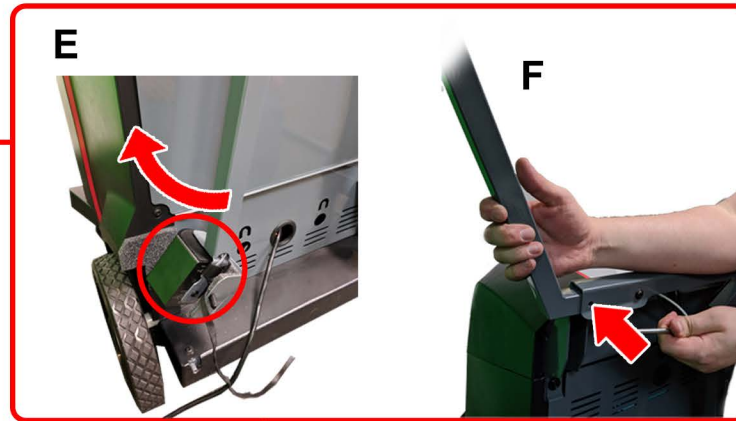
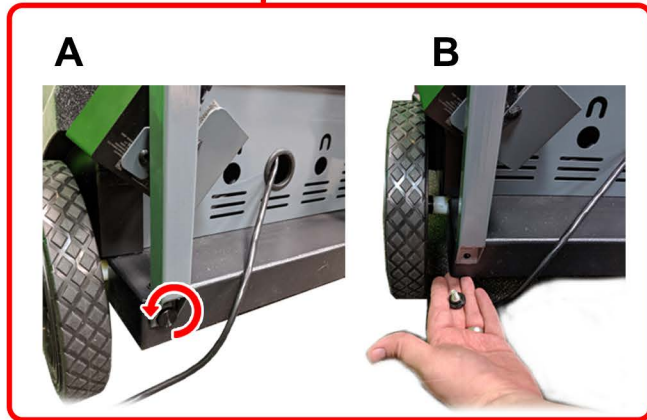
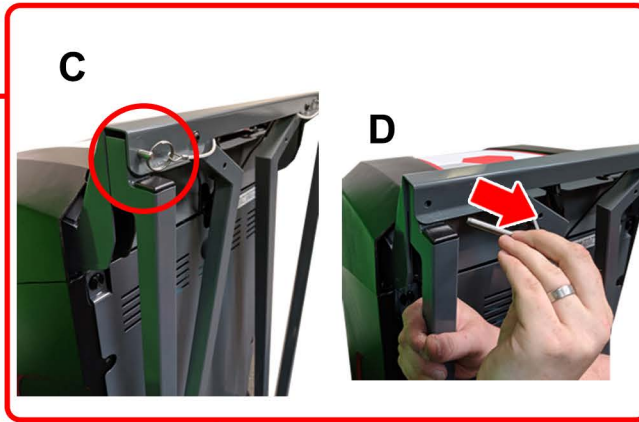




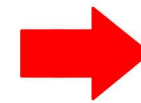
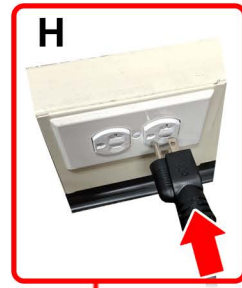
SETUP 01 VIVE PRO 2



BACK VIEW



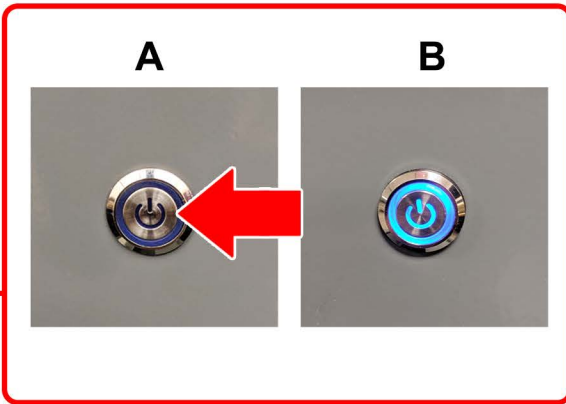
FRONT VIEW





SETUP 02

FRONT VIEW



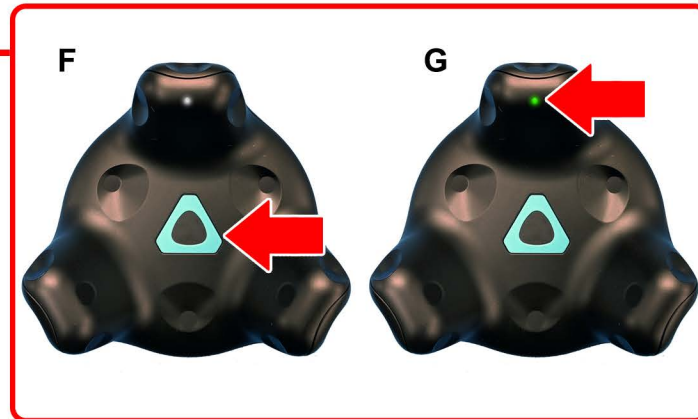
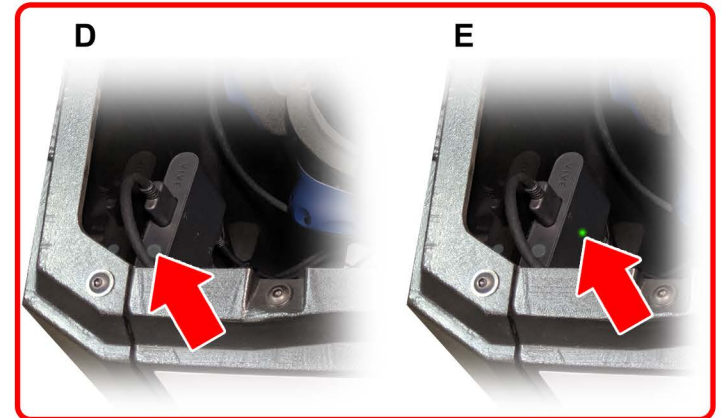
C

Launching SimSpray Services

VIVE Console	
SteamVR	

Turn on the linkbox. A light will indicate if it is powered on.

The SimSpray software will launch once both indicators turn green.





POSITIONING

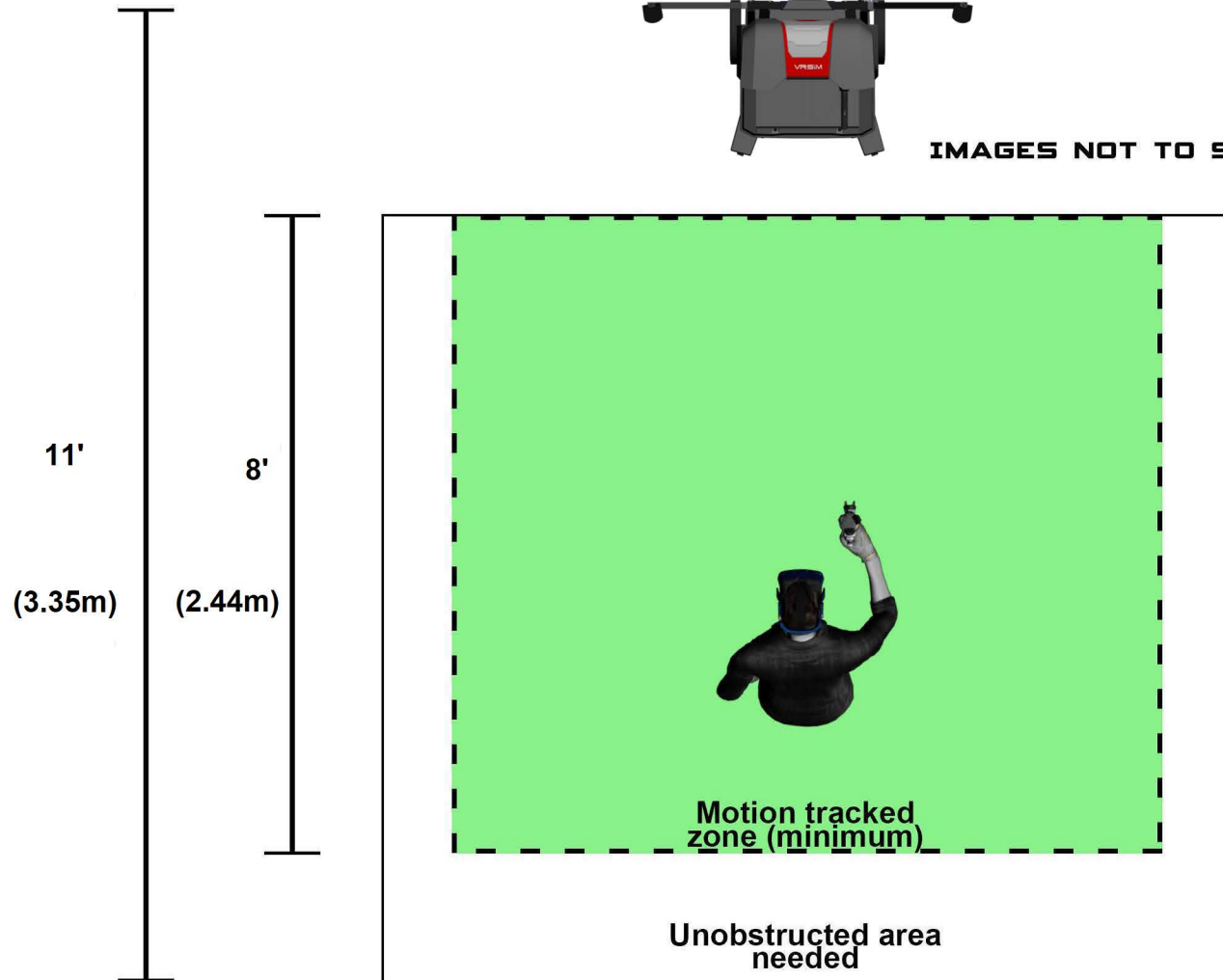
TOP VIEW

10' (3.05m)

8' (2.44m)



IMAGES NOT TO SCALE

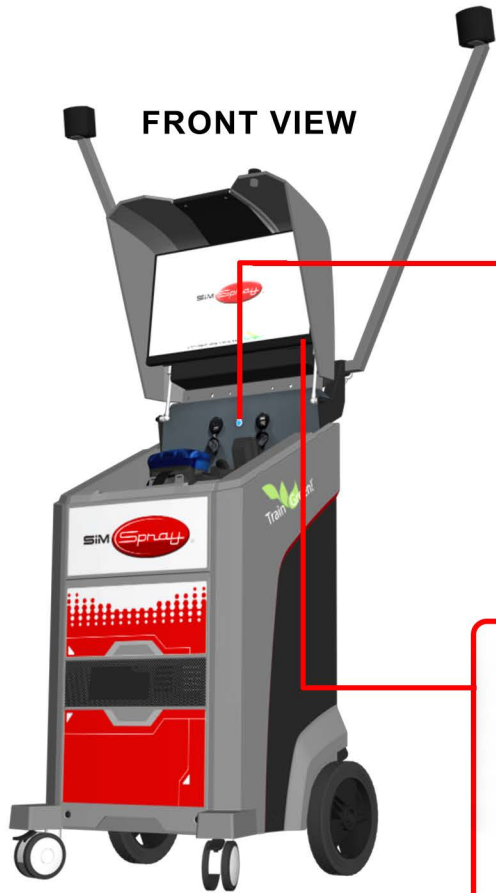


- Aim SimSpray away from windows, TVs, infrared sources, and reflective materials.
- Turn off infrared emitting devices.
- Bluetooth devices may reduce motion tracking quality.
- 9' (2.74m) height minimum recommended.

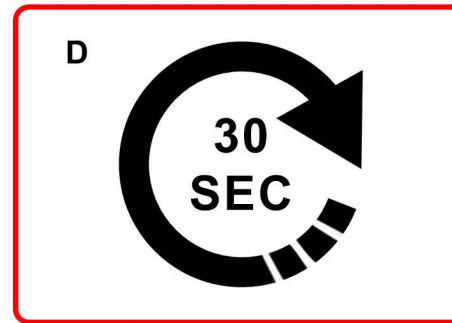
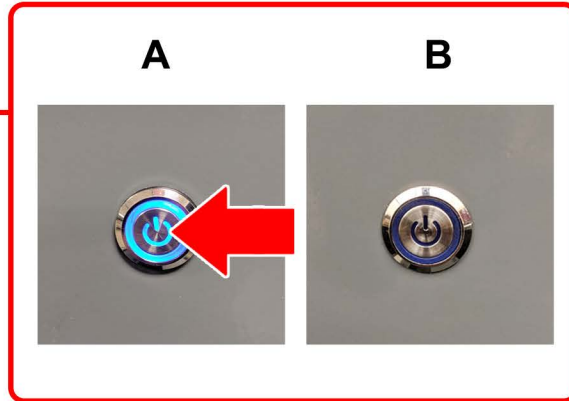
Note: this positioning applies to SimSpray software version 3.4 or later.



POWER DOWN



FRONT VIEW





DOCUMENTATION

Scan Here for Additional Support:



SETUP



TROUBLESHOOTING