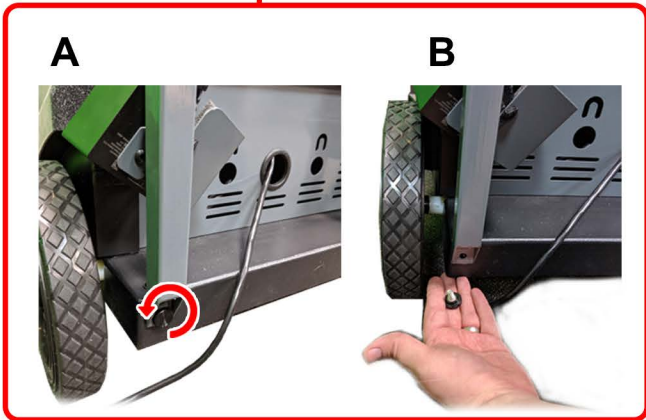
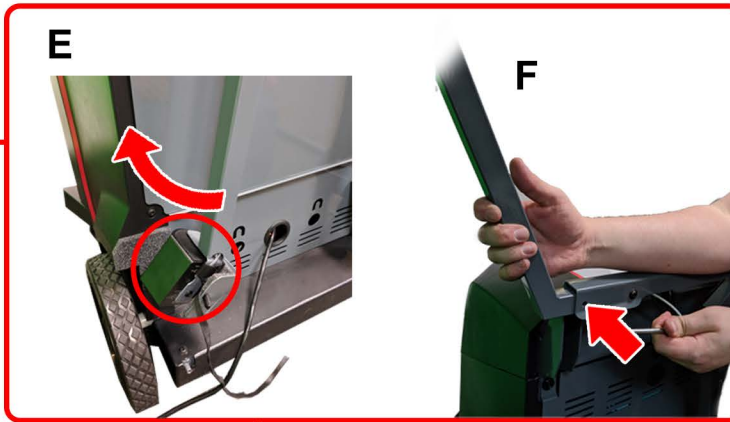
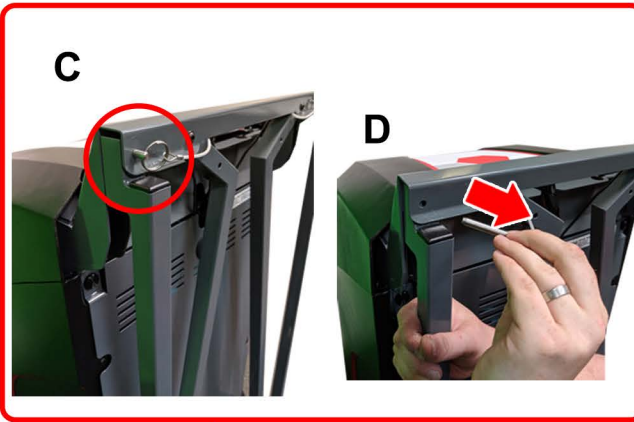




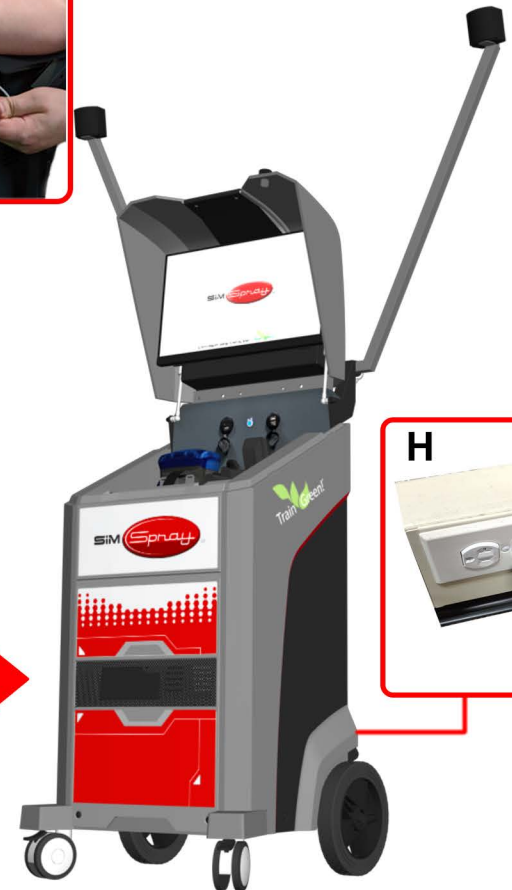
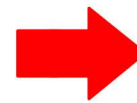
SETUP 01



BACK VIEW



FRONT VIEW

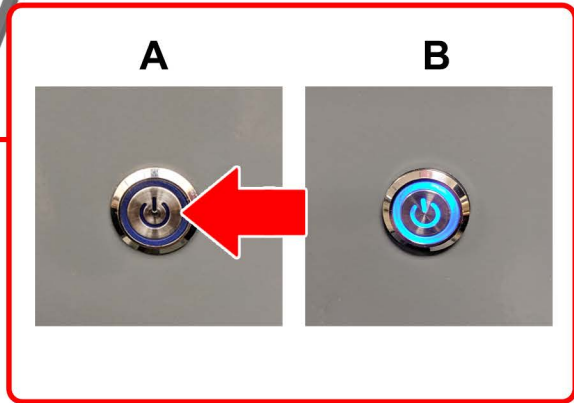




SETUP 02

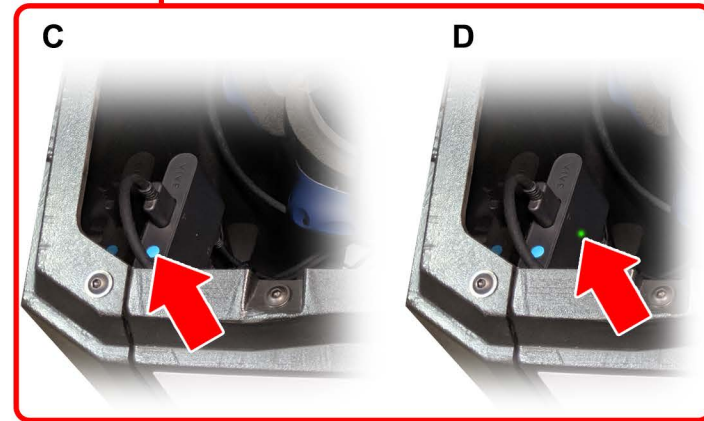


FRONT VIEW



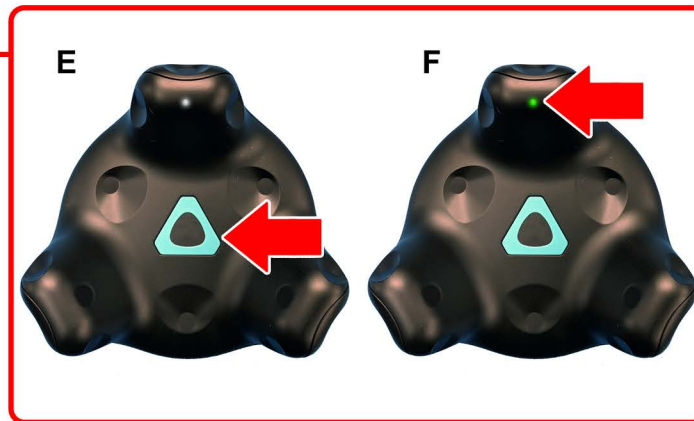
A

B



C

D



E

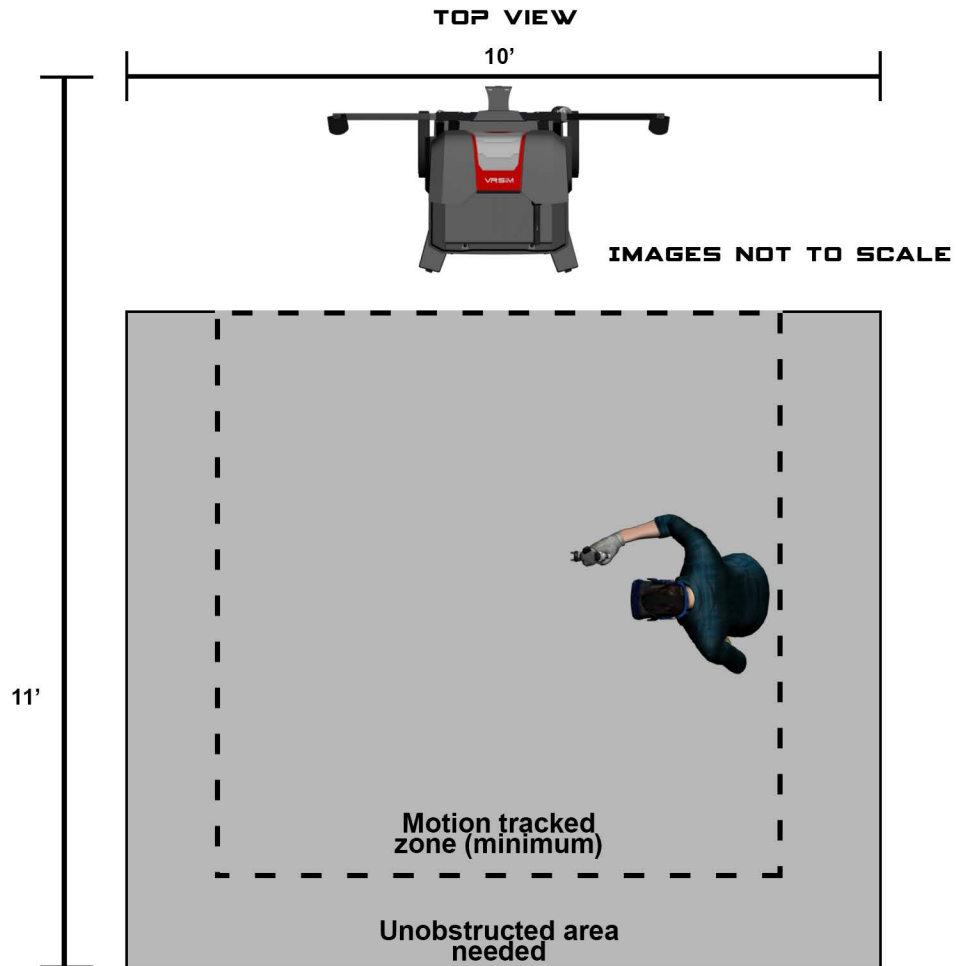
F



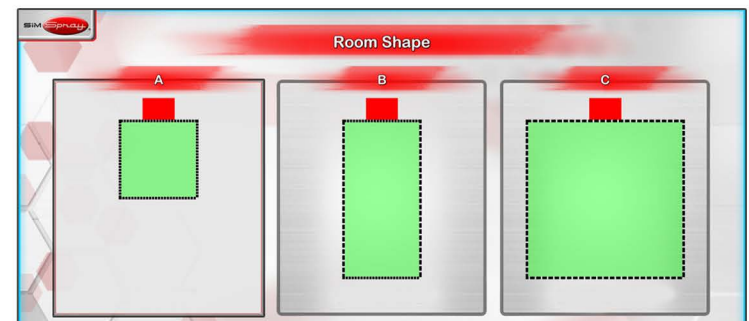
F



POSITIONING

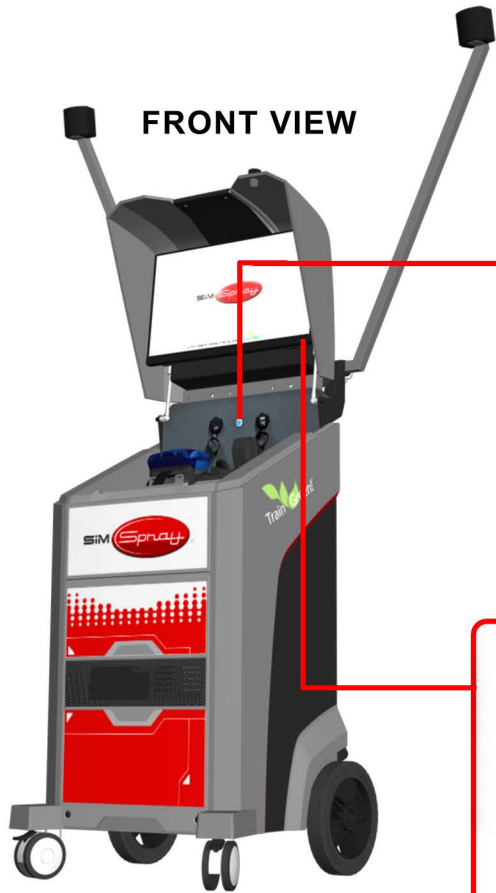


- 10' height minimum recommended.
- Admins can select from default room shapes (e.g., small 6.7' x 6.7', medium 15.7' x 12.5', or large 25' x 12.5').

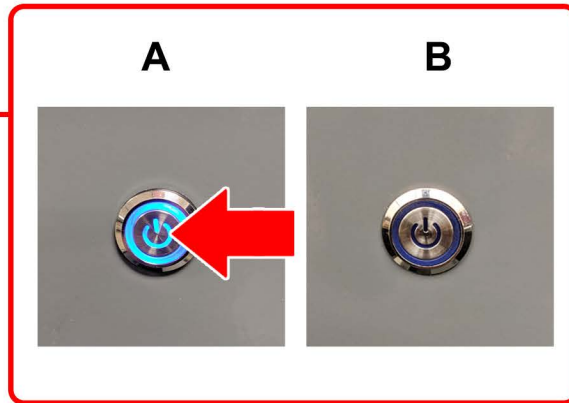




POWER DOWN



FRONT VIEW

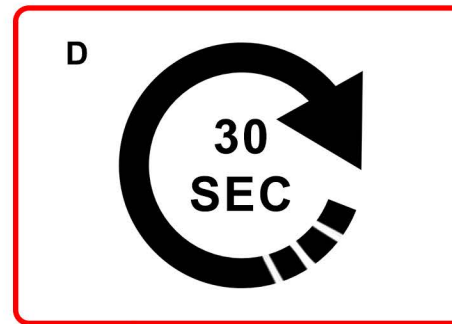


A

B



C



D



E